

W  
N  
O  
+9

INTER  
DIMENSIONAL  
JOURNEYS



## ABOUT EDGE, THE FOUNDATION

Edge, The Foundation helps to make this a better world through education, for the present and for future generations. This we hope to achieve through educational scholarships, academic donation management services and grants for students.

Imagine centuries ago, lying back on a haystack and stargazing, and wondering how and why the stars were orbiting around us. Yes, there was a time when mankind was at the center of a universe. Let's rewind a few more centuries to a place where people are playing out their roles on a flat earth but terrified of falling off the far edges and burning in hell for eternity. Then fast-forward to today, where some are hoping to take a rocket ship to the moon for a weekend under those very stars in this lifetime. Indeed, we are discovering more and more about our wondrous universe, yet so much about ourselves still remain unexplored. Imagine if we could travel in time, to a parallel universe and live to return and tell the tale.

Throughout history, in philosophy and in science, great thinkers have helped open our eyes time and again to the existence of new worlds and ideas. In art, the Modernist movement helped shed traditional values, and emphasized the importance of individual experience, and the world is so much the richer for it. Challenging the norm has led us to discover that there is more to our world than meets the eye. It boggles the mind to think that there are not 3, but actually 9 physical dimensions plus time. Yes, it is the stuff of fiction. So, what do these dimensions hold for us? What would our future look like if we could journey into these other dimensions? Nobody knows for sure, but when did that stop us from taking fiction concepts and building around that?

This exhibition is an attempt to bring meld that fiction with our reality to help shed some light into the uncharted realms. It is that stage where a handful of promising individuals who are unafraid to ask uncomfortable questions and to seek clarity. We may never end up in a voyage through the unexplored dimensions, but these artists' works surely engage all our senses in a way that perhaps offers a sneak peek into inter-dimensional journeys.

**Edge, The Foundation**



Soma Surovi Jannat



Khanya Mehrpar Azad



Apu Rajbongshi



Jinnictun Jannat



Syed Tareq Rahman



Marmun Nahar Keya



Farzana Ahmed Umi



Anisuzzaman Faroque



Munira Mehrulh Azad



Hridita Anisha



Sharad Das



Suborna Morahisada



Rezaul Anwar



Matmuda Siddik



Azara Fawmi Knon



Nergis Poly



Rezaul Ritna



Bipom Roy

**9+ONE** is collage of works by a handful of young local artists who are passionate about understanding the human condition. The common thread is their deep insight combined with a keen sense of observation and their unorthodox styles of expression.

The exhibition title alludes to the nine physical dimensions plus time, and the possibility of interdimensional journeys - if only in our minds.

You will find pieces that are rather playful in nature, but carry serious messages. Others pose disturbing and uncomfortable questions, and rightfully so.

We find their work a breath of fresh air and inspirational - as provocative as they are exhilarating. Let us enjoy the surprising journeys that await us.



## Looong Talk

30 cm × 45 cm

Nargis Poly

*The soul finds its way  
Questions to answers await  
A quest for beyond*

## The Tiger in His World

30 cm × 45 cm



# 1.

## Ananya Mehpar Azad

Anannya Mehpar Azad, a talented visual artist from Dhaka, showcases her unique artistic expression through painting and folklore-inspired themes. Graduating with a BFA in graphic design from the University of Dhaka in 2015, she now thrives as a freelance artist and co-owner of The Malachite Casket, a hand-painted clothing fashion line in Dhaka.



Azad's work masterfully intertwines folklore, mythology, ethnicity, and nature. Her vibrant strokes bring biodiversity to life, enveloping viewers in an enchanting world of colorful motifs along with flora and fauna. Drawing inspiration from her background in fabric design, she incorporates pure silks and sequins, adding a tactile quality to her art. Watercolors and digital media deepen the dimensions of her visual narratives.

Delving into the lives of native Sundarbans residents, Azad depicts their simple yet resilient existence and their belief in protective deities. She portrays these people as guardians of the forest, harmoniously coexisting with nature. Her art also emphasizes the thriving biodiversity in urban spaces, where birds, insects, cats, owls, and flowers adapt and flourish despite urbanization's challenges.

Azad's illustrative flair and imaginative interpretations create a captivating visual tapestry. Using motifs and decorative embellishments like sequins, stones, and beads, she bedazzles her creations. Her art transcends the canvas, engaging viewers in a sensory experience that evokes wonder and introspection.



**THE GODDESS**

76 cm × 61 cm

***Within fiery furs  
Eyes ignite like sparkling stars  
Dictating new bars***

# 2.

## Anisuzzaman Faroque

Faroque, with his remarkable representational and sketchy portrait modelling, is an artist on the rise. His mastery of sculpting shines through his most captivating pieces crafted in clay. The fluidity of line drawing, honed in his urban experiences, adds depth and movement to his postmodern sculptures. Faroque's ardency of playing with clay



**Hanging Moon 2**

76 cm × 36 cm × 36 cm



stems from his early childhood spent near water and soggy soil. Anchoring his feet on the drenched lands and staring at those high mountains used to always inspire him to take the beauty of earth to the peak. Now with stories of both struggles and successes, he is well on his way to enjoying the view from the top. Playful yet seductive, the cool and tactile clay shapes freeze into bronze, as if by alchemy, to endure time and tell its tale. His subtle and elegant compositions are thought provoking, bridging the metaphysical with that which is worldly – stories full of complexities and contradictions.

Seductive shaped clay nuggets morph into bronze.

Provocative contradictions and ideas captured in 3D objects that we can feel and touch.

Some notable exhibitions and awards:

- Yaiwan Annual 3rd, AVAT, Qingdao Invitational Art Exhibition, China
- Young Artist Art Exhibition, Bangladesh Shilpakala Academy, Dhaka
- Asian Art Biennale Bangladesh
- National Sculpture Exhibition, Bangladesh Shilpakala Academy
- “Best Award for Sculpture” at 21st Young Artists Art Exhibition, Bangladesh Shilpakala Academy (2018)
- “Best Award for Experimental Art” at Annual Art Exhibition, Faculty of Fine Art, University of Dhaka (2017)



## Iron Leaf

79 cm × 87 cm × 20 cm

*Iron leaf unveils  
Rustling secrets in the wind  
Nature's ancient tales*



**The New Normal**

137 cm × 152 cm

**3.**

**Auntora  
Mehrukh Azad**



**Ground Zero 2**

76 cm × 61 cm

*There is tomorrow  
Hope is a rising phoenix  
A new hope shall grow*

Auntora Mehrukh Azad, an artist on the rise from Dhaka, explores the evolving relationship between nature and humanity in her thought-provoking works. With an MFA in 2017 and a BFA in 2015 from the Faculty of Fine Art at the University of Dhaka, she is deeply immersed in the world of art since her childhood.

As a freelancer and co-owner of The Malachite Casket, a hand-painted clothing fashion line, Auntora's artistic journey goes beyond traditional mediums. In her paintings, she captures the encroachment of urban life on nature through an invigorating color palette, incorporating urban objects to symbolize the displacement of the natural world. This conflict deeply resonates within her, shaping her emotional journey as an artist.

Her stylized paintings portray familiar Bangladeshi landscapes, blending her admiration for nature with her urban upbringing. Seeking a sustainable coexistence between humanity and the environment, her works evoke contemplation and curiosity. Blurring the lines between reality and imagination, she captures both the tangible and the envisioned.

Auntora's notable achievements include being a youth delegate at the Bangladesh Youth Delegation to India in 2016. She has exhibited her works in renowned exhibitions and art camps, such as the prestigious Dhaka Art Summit 2023 curated by Diana Campbell Betancourt. Her works are cherished in private and corporate collections, including the Samdani Art Foundation and Imago Mundi: Luciano Benetton Collection.





## The New Normal

137 cm × 152 cm



# 4.

**Azizee  
Fawmi Khan**

Lorem ipsum dolor sit amet, consectetur adipiscing elit, sed diam nonummy nibh euismod tincidunt ut laoreet dolore magna aliquam erat volutpat. Ut wisi enim ad minim veniam, quis nostrud exerci tation ullamcorper suscipit lobortis nisl ut aliquip ex ea commodo consequat. Duis autem vel eum iriure dolor in hendrerit in vulputate velit esse molestie consequat, vel illum dolore eu feugiat nulla facilisis at vero eros et accumsan et iusto odio dignissim qui blandit praesent luptatum zzril delenit augue duis dolore te feugait nulla facilisi.

Lorem ipsum dolor sit amet, consectetur adipiscing elit, sed diam nonummy nibh euismod tincidunt ut laoreet dolore magna aliquam erat volutpat. Ut wisi enim ad minim veniam, quis nostrud exerci tation ullamcorper suscipit lobortis nisl ut aliquip ex ea commodo consequat.

Lorem ipsum dolor sit amet, consectetur adipiscing elit, sed diam nonummy nibh euismod tincidunt ut laoreet dolore magna aliquam erat volutpat. Ut wisi enim ad minim veniam, quis nostrud exerci tation ullamcorper suscipit lobortis nisl ut aliquip ex ea commodo consequat. Duis autem vel eum iriure dolor in hendrerit in vulputate velit esse molestie consequat, vel illum dolore eu feugiat nulla facilisis at vero eros et accumsan et iusto odio dignissim qui blandit praesent luptatum zzril delenit augue duis dolore te feugait nulla facilisi.

Lorem ipsum dolor sit amet, consectetur adipiscing elit, sed diam nonummy nibh euismod tincidunt ut laoreet dolore magna aliquam erat volutpat. Ut wisi enim ad minim veniam, quis nostrud exerci tation

***Perspectives it knows  
Mind's kaleidoscope unfolds  
Cognitive hue shows***



Cognitive Hue in  
The Book of Thy

183 cm × 122 cm



**Mundane Olive**

122 cm × 152 cm



# 5.

## Farzana Ahmed Urmi

An expressionist at heart, Farzana wields immense power with her brush to narrate deep seated human experience that result in works that are highly emotionally charged. Although acrylic on canvas is her preferred medium, she regularly experiments with vegetable dye, colored ink, and other mediums to give a versatile and multifaceted voice to her paintings.



**Marijan (Camp 18)**

50 cm × 75 cm

*Whom I thought I know  
Veil lifts and the truth reveals  
Making my tears flow*



Her journey as an artist took a significant turn when she was invited as an artist-in-residence to the refugee camps of Cox's Bazar. The distressing realities of their struggles and triumphs left a most lasting impression on Farzana, and her latest works are a testament to their courage, as well as her own. With two solos, including a showcasing in Tokyo, Farzana has befittingly earned several accolades. The Media Best Award at the Annual Art Exhibition of Institute of Fine Arts, Dhaka and the artist 'Saffuddin Ahmed' scholarship are two of the outstanding achievements.

**Mukbul (Camp\_18)**

122 cm × 152 cm





**Whom I Know 1**

122 cm × 152 cm

## Orange Dust

38 cm × 57 cm



6.

Hridita Anisha

Hridita Anisha is a visual artist and illustrator based in Dhaka. She obtained her BFA (2017) and MFA (2019) from the Faculty of Fine Art at the University of Dhaka, specializing in Oriental Art. Since completing her degrees, Hridita has pursued her own artistic practice, focusing on painting while also engaging in illustration work for children's books and magazines.

In 2022, Hridita had the opportunity to participate in "Artists' Make Space," an international collaboration organized by the British Council, Tara Theatre, and Britto Arts Trust. Her participation in this event provided her with exposure to diverse artistic perspectives and practices. Additionally, she has showcased her artwork in notable exhibitions such as the Young Artists' Exhibition in 2022 and the National Exhibition in 2023.

Hridita's artistic endeavors are deeply influenced by Oriental aesthetics, reflecting

her interest in the region's artistic tendencies. She draws inspiration from folk art from various cultures around the world, incorporating elements of these traditions into her own unique artistic style.

In 2022, Hridita achieved recognition as the Champion of the Children's Book Illustration Contest, organized by the Ekhlassuddin Memorial Trust in collaboration with the EMK Center and the Child Centric Creative Center. This accomplishment further highlights her talent and skill in the field of illustration.

With a passion for exploring the rich heritage of Oriental art and a commitment to bringing joy and imagination to children through her illustrations, Hridita Anisha continues to create captivating artworks that bridge cultural boundaries and celebrate the beauty of artistic expression.

***Moments so sublime  
An ethereal embrace  
Suspended in time***





## Whom I Know 1

122 cm × 152 cm



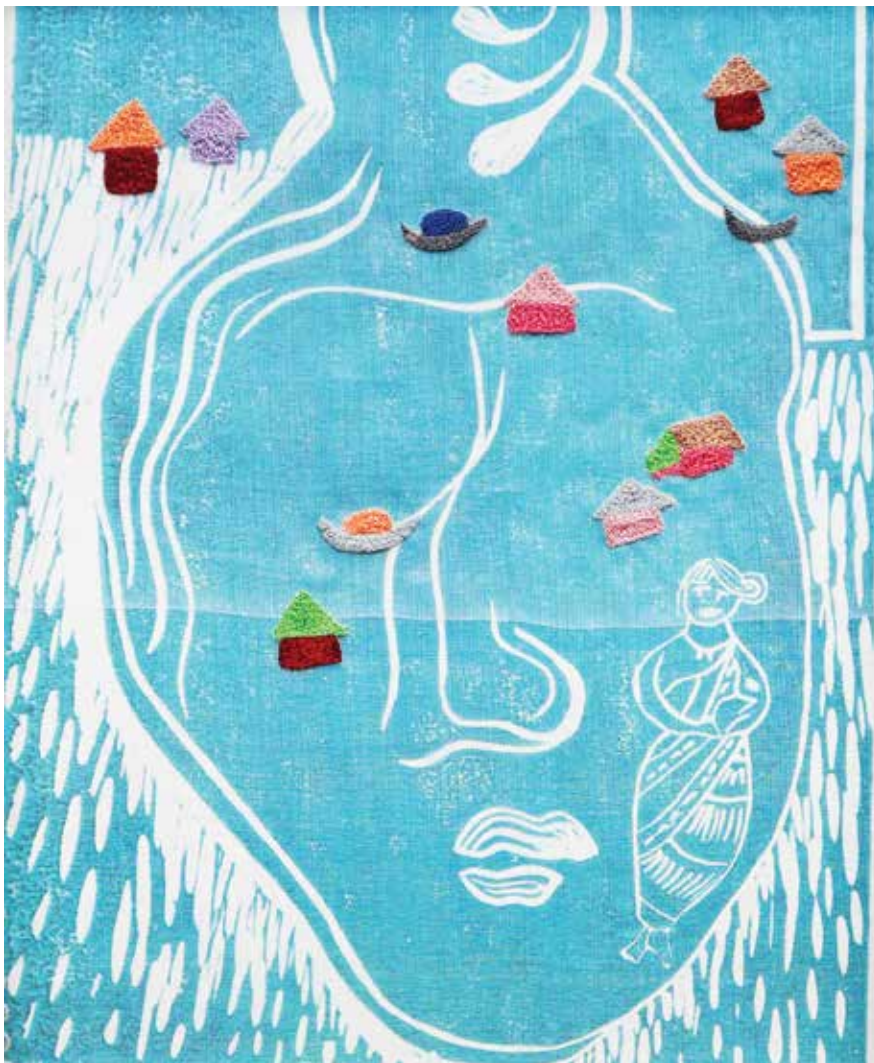
**Whom I Know 1**

122 cm × 152 cm



## Bedeni

20 cm × 25 cm



# 7.

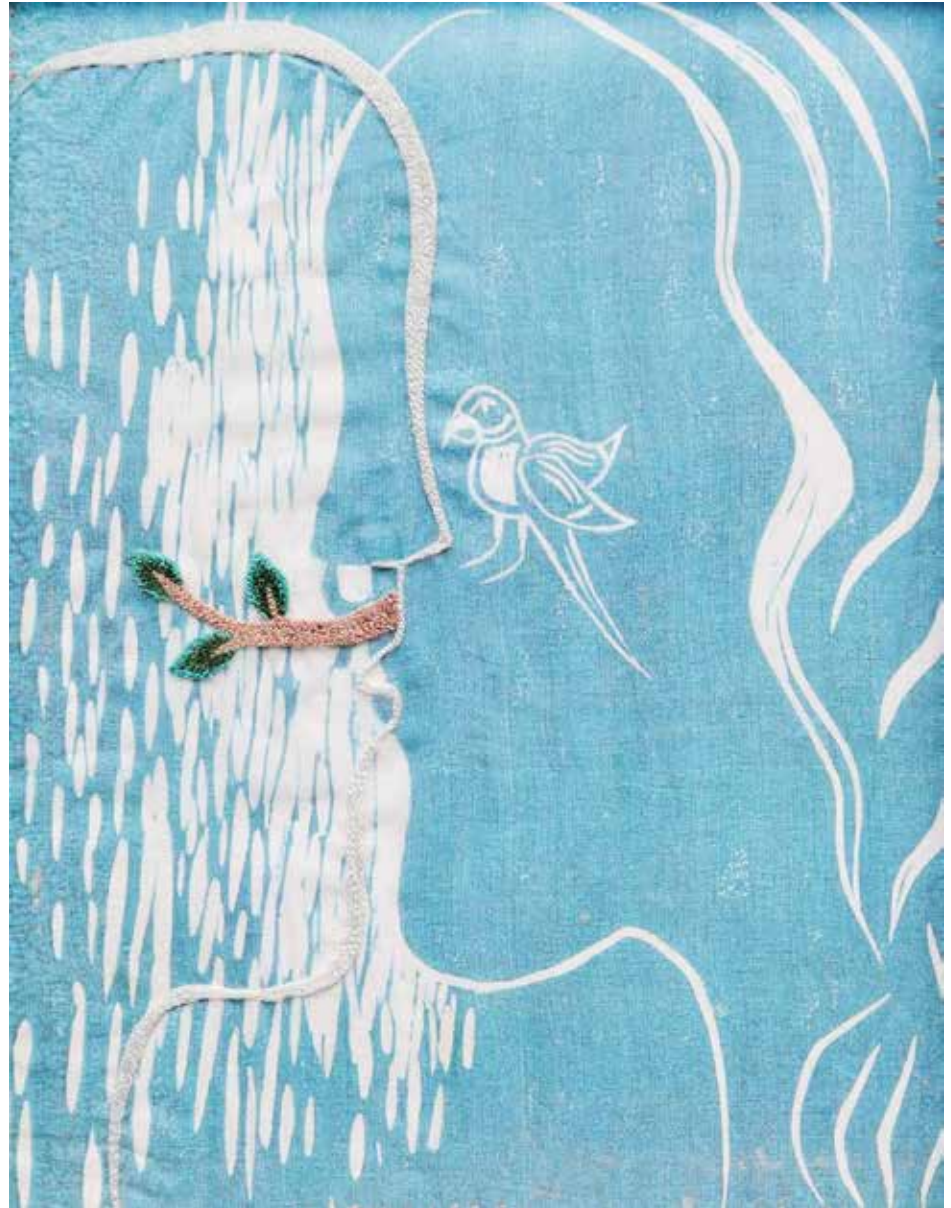
## Jinnatun Jannat

Jinnatun Jannat, a talented visual artist hailing from Dhaka, Bangladesh, has captivated audiences with her thought-provoking paintings. Her works not only reflect her personal experiences and roots, but also encourage viewers to contemplate their own existence. Jannat's art revolves around the recurring motif of "roots," symbolizing her country,

home, and the interconnectedness of humanity.

Having completed her Master of Fine Arts degree from the Faculty of Fine Art at the University of Dhaka, Jannat has established herself as a prominent figure in the art scene. Her first solo exhibition, titled "Naree Sutra," was held in 2021 at the EMK Centre in Dhaka, showcasing her distinctive style characterized by vivid human expressions.

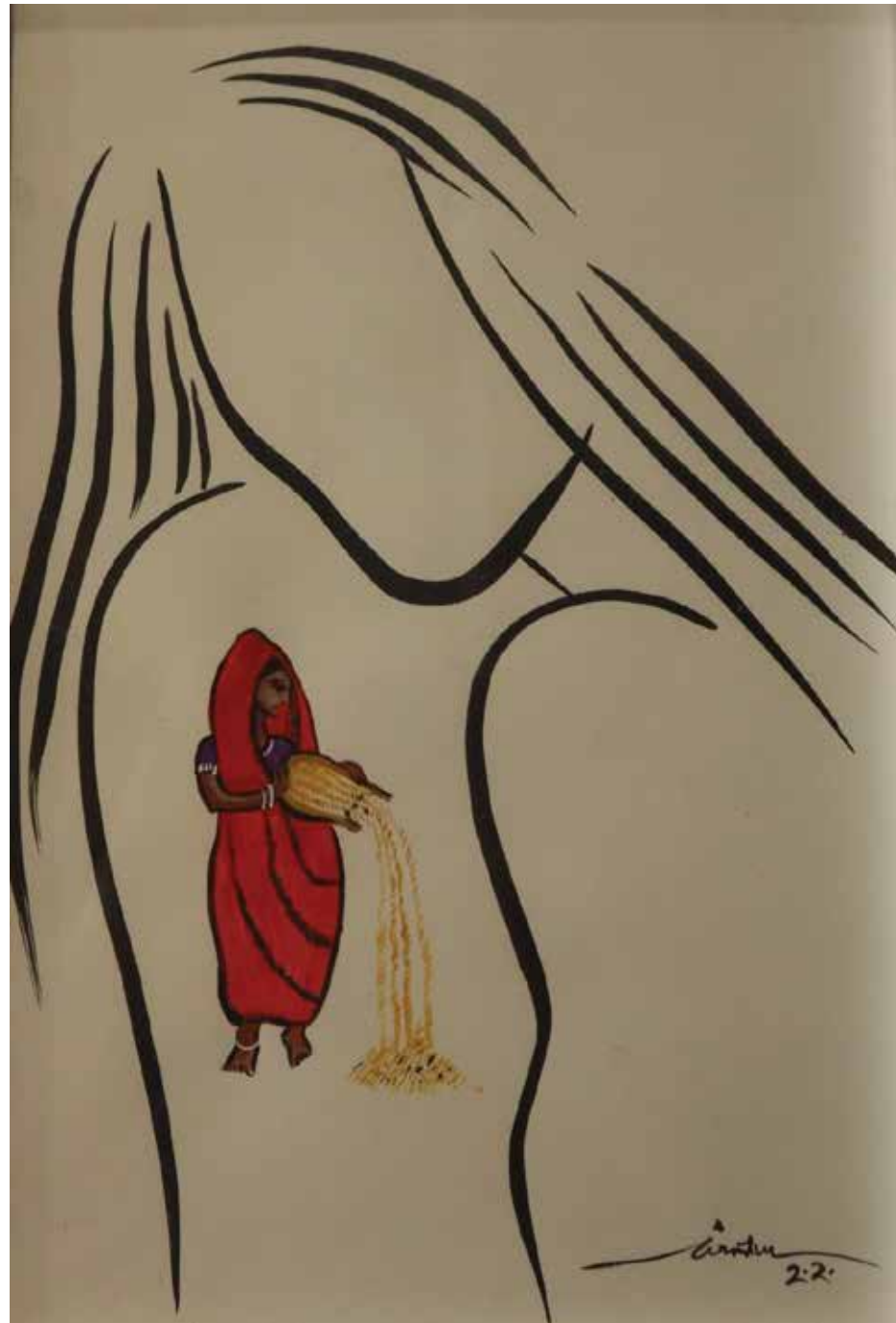
Throughout her career, Jannat has embarked on several notable artistic endeavors. She participated in the prestigious "Documenta 15" exhibition in Kassel, Germany, in 2022, as a representative of the Britto Arts Trust. Additionally, she attended the Delhi Art Fair in 2023, curated by Mahabubur Rahman, again under the auspices of the Britto Arts Trust. Jannat also worked as an Assistant Research Volunteer for the Swedish project "OBS! Bangladesh," exploring the possibilities and challenges of artistic activism in minority communities within Bangladesh.



**Zugal**

20 cm × 25 cm

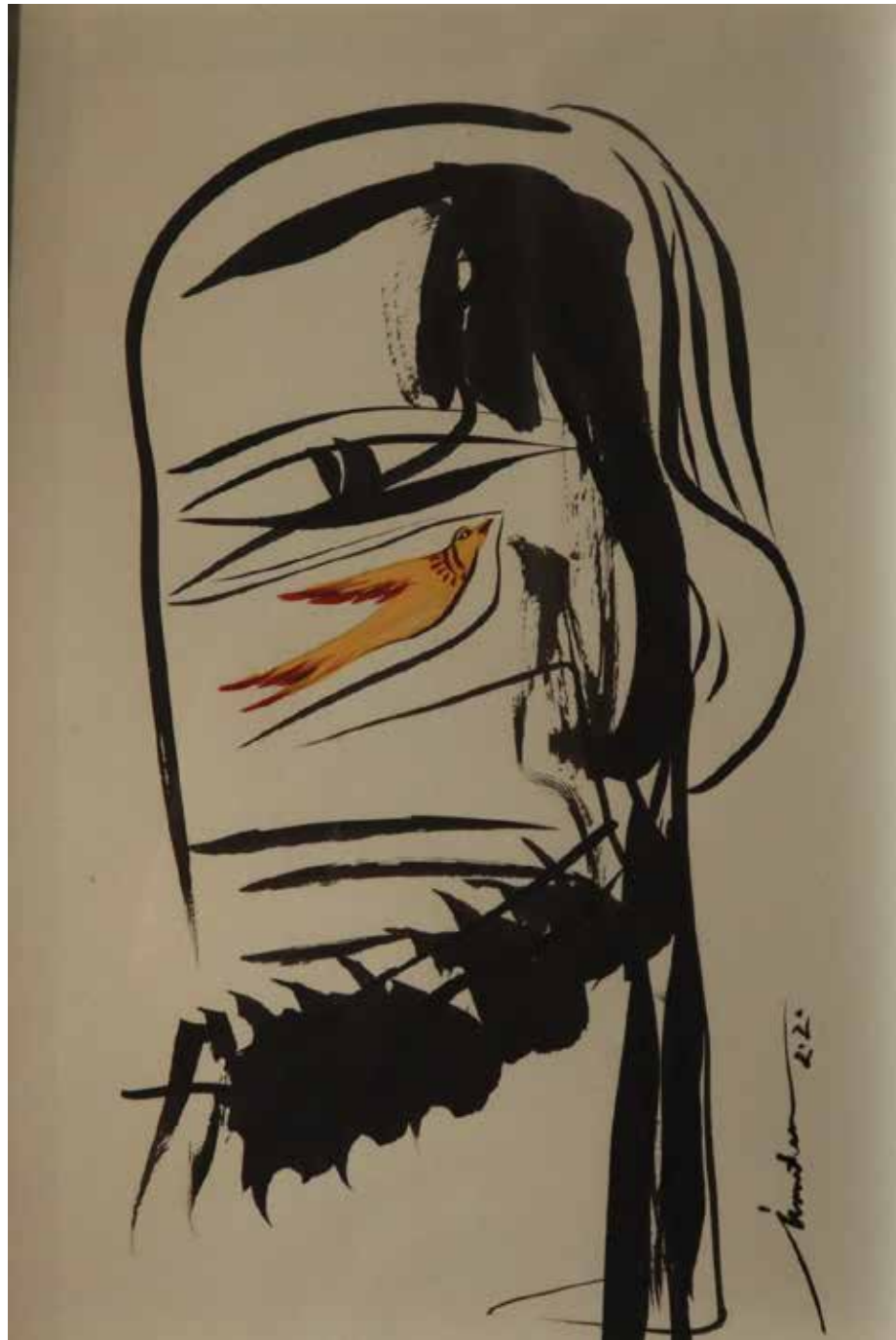
***No rule, role or goal  
Fly away where you want to  
With your parrot soul***



## Whom I Know 1

122 cm × 152 cm





**Whom I Know 1**

122 cm × 152 cm

# 8.

## Nargis Poly

sees her quirky side surfacing through her subjects, imbuing age-old popular tales with her rich and spicy narratives. The viewer is left with a delightful feeling that here is an artist who flexes her witty and analytical mind and combines it with a truly hardworking spirit. Poly has a genuine passion for art conservation and she finds fulfilment in restoring national



**Gift from King Midas to the Poor**

213 cm × 152 cm

treasures for future generations.

Her notable exhibitions:

i. 9th Beijing International Art Biennale – 2022; China.

ii. Restrictions, an exhibition of miniature artworks – 2021; Clayhill Arts, Somerset.

iii. SAARC Women Association Exhibition – 2021; Edge Gallery, Dhaka.

iv. Tri Arts, an International Art Exhibition – 2019; Shimla, India.

v. Mumbai Art Fair, Group Art Exhibition – 2018; India.

The Skin of a Living Thought, Solo Exhibition – 2017; Alliance Francaise, Dhaka.

***Truth in vivid hues  
Intimate, affectionate  
All elements fuse***



**Mother in Distress**

61 cm × 61 cm





# Najmun Nahar Keya

Najmun Nahar Keya is a space-time continuum residing in plain sight, connecting the rich heritage of ancient Dhaka with the advancements of contemporary Tokyo. Najmun contrasts her present sentiments in this contemporary world with the entirety of her past memories. She is especially intrigued by the contrast between social norms and human conduct within the three dimensions encapsulating us with the relativity of time. Her works of art mostly demonstrate her propensity for nostalgic memories, associated with archival photographs of her family, architectural beauty, new materials, recent societal and global political events, and personal experiences.

Bangladesh, India, Nepal, Japan, the Netherlands, Poland, France, and other nations have hosted exhibitions of Keya's art. Keya was awarded a scholarship by the Aminul Islam Trust in 2006 and 2007. She earned the Grand Prize at the Young Painters Exhibition in 2010, which was put on by Berger Paints Bangladesh Limited. She got an Honorable mention prize at the 18th Asian Art Biennale in 2018 in addition to winning the Charles Wallace Fellowship in the UK. Keya has formally joined the Britto Arts Trust, the very first artist-run non-profit. She is now a Lakshmi Mittal and Family South Asia Institute artist fellow at Harvard University.

*Firm reality  
In the mesh of verity  
Odd alacrity*



Kintsugi Dhaka-30  
63 cm × 46 cm



## Bunon

31 cm × 36 cm





**Kintsugi Dhaka-28**

34 cm × 44 cm

## Massive Cow (Nocturn)

122 cm x 153 cm



# 10.

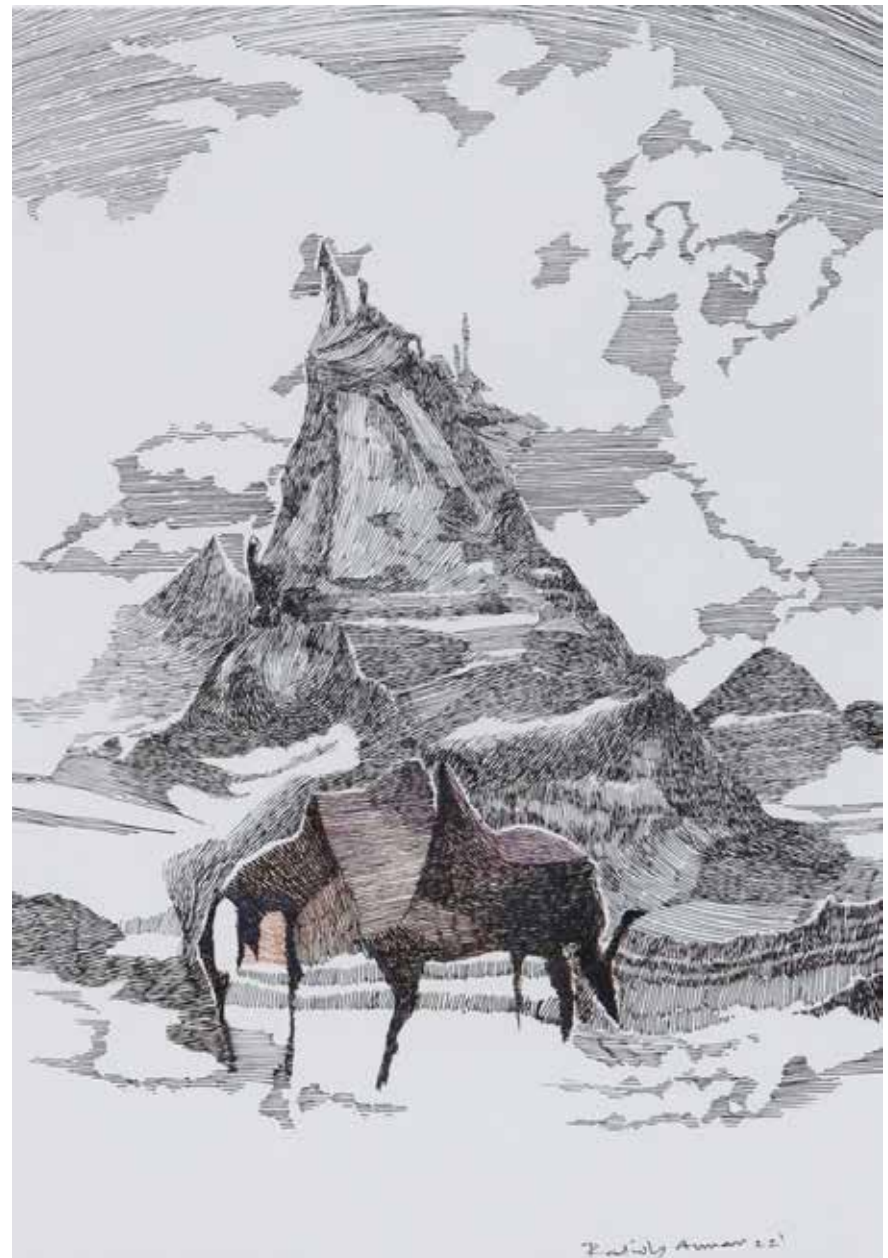
## Rakibul Anwar

Rakibul Anwar is a visual artist whose artworks have a metaphoric potency that invites the viewer to discover the interconnectedness of the elements within his paintings. Rakib actively observes his surroundings – be it space, people, structures, shapes, or other subtler things. Once he has taken an active interest in something – he spends time ruminating on

it - inviting memories, feelings, and reactions from within, through several mixed-media paintings produced in watercolor, acrylic, charcoal, and ink medium.

The artist has engaged in creating works of art, participating in both national and international exhibitions and artist residency programs conducted in Bangladesh, United Kingdom & Germany, including 24th National Art Exhibition, 21st and 22nd Young Artists Exhibition, Bangladesh Shilpakala Academy, Dhaka, and Documenta 15, Kassel, Germany. He has also collaborated with contemporary artists and art associations such as the British Council, Britto Arts Trust, Bengal Shilpalay, Brihatta Art Foundation, Platform Art Space, Dhaka, Bangladesh and Tara Theater, London, UK.

***His moves remain bold  
Chess pieces in gold witness  
Strategies unfold***



**Massive Cow-7**

20 cm × 30 cm





## Massive Cow (Dusk)

153 cm x 122 cm

## The Conversation

76 cm × 60 cm



# 11.

## Rasel Rana

Rasel Rana is a painter who primarily works with painting-based installations, drawing, and painting. Their artistic focus often centers around contemporary issues, with a particular emphasis on queer art. By connecting their artworks with the realm of dreams, Rasel explores their own thoughts on society, diversity, and the cosmopolitan.



Rasel Rana's unique art style is instantly recognizable and is characterized by the use of vibrant colors and symbols. Through their installations, Rana creates multi-layered pieces that reflect the complexities of life and society. Their artworks delve into themes of human identity, gender positions, and the diverse perspectives found within society.

In the powerful series titled "Gender Bird," Rasel skillfully captures the essence of each subject in a simple yet sensual and compelling manner. Through their art, Rasel adeptly depicts the depth of societal views, providing insight into the soul and profound thoughts of the subjects portrayed.

Rasel Rana holds a B.F.A and M.F.A from the Faculty of Fine Arts, University of Dhaka. Their artworks have been exhibited in various locations, including Bangladesh, the United Kingdom, Japan, and India.

Rasel's artworks possess a distinct and intricate quality, inviting viewers to engage with their thought-provoking narratives and explore the layers of meaning embedded within each piece.



**Waiting for... (1)**

102 cm × 121 cm

***Began paper tales  
They listen in gales, in breeze  
Their plumes rapt, they freeze***



## Inner Nature of Sound-10

24 cm × 24 cm × 28 cm

Rupom Roy



# 12.

Rupom Roy

Rupam Roy is a renowned sculptor whose captivating artworks delve into the intricate relationship between sound and objects. Through his sculptures, he skillfully translates diverse sound sources into spontaneous gestures, creating a visual representation of the auditory experience.

Having obtained a post-graduation degree from the Faculty of Fine Arts at Dhaka University in 2011, Rupam's artistic exploration centers around the representation of time through sound. Growing up in a village, he was exposed to the contrasting sounds of rural and urban environments, which deeply influenced his artistic perspective. Contemplating the significance of sound as a marker of time, Rupam imagines how the differences between past and present would manifest if he were centuries older. He categorizes sounds based on his personal perception, acknowledging the subjective nature of their interpretation.

Driven by a spirit of experimentation, Rupam classifies sounds into three

categories: "direct sounds" derived from nature, "indirect sounds" originating from artificial sources, and "echo" sounds that reverberate in space. Through his spontaneous gesture drawings, he skillfully captures the power and essence of these sounds by utilizing overlapping lines. Rupam recognizes the fluidity of sounds and their ability to influence the characteristics of drawing. Additionally, he incorporates sound objects into his artworks, creating a multisensory experience for the viewers.

Throughout his artistic journey, Rupam Roy uncovers the captivating nature of sound, pushing the boundaries of perception. His artworks invite viewers to embark on a harmonious exploration of the interplay between art and sound, fostering a deeper understanding of the inherent connections between these two realms. Through his thought-provoking sculptures, Rupam invites us to engage with the invisible world of sound and its profound impact on our perception and artistic expression.

***Melodies take flight  
Aromatic symphony  
With the touch of light***



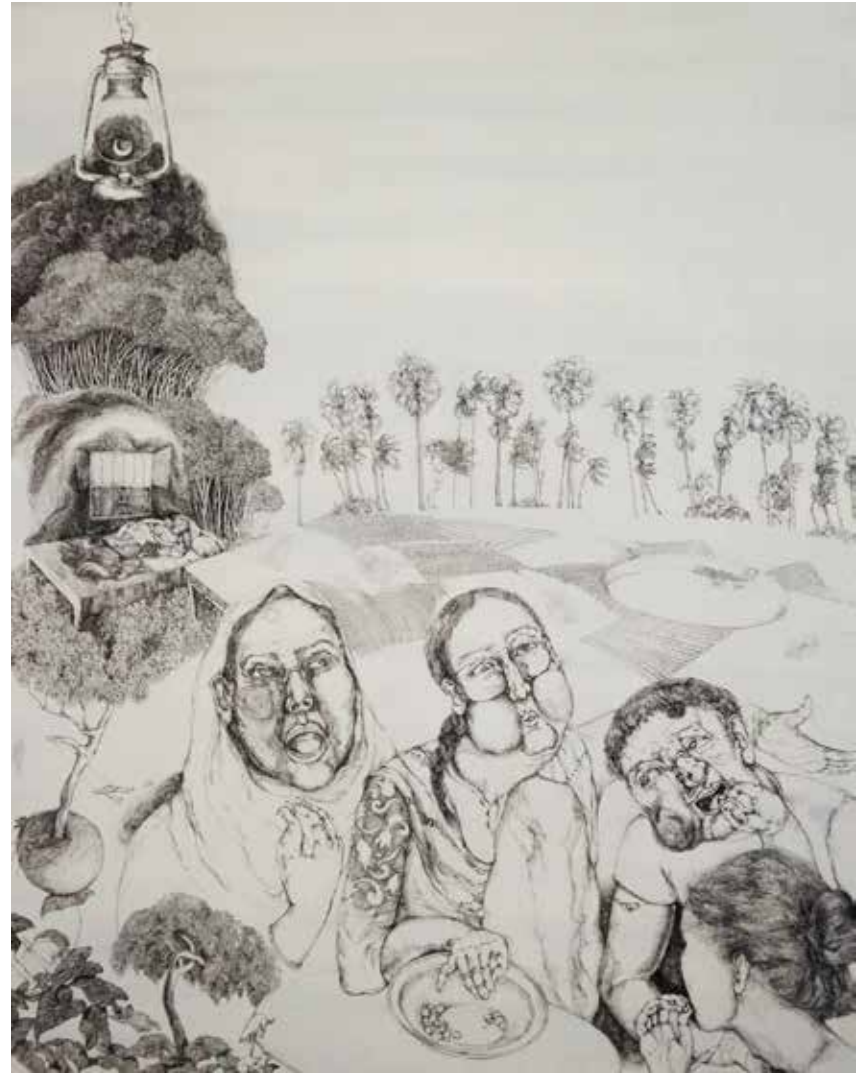
**Inner Nature of Sound-12**

160 cm × 50 cm × 143 cm



# 13.

## Soma Surovi Jannat



**In The Timeles Sweetland**

122 cm × 153 cm

Possessing a nomadic spirit, Soma Surovi Jannat not only travels through the scenic rural alleys and picturesque river banks but, she also travels through an exterior world. She leaps through a reality utterly unconstrained by anything the human mind can conceive, visualize or feel. Every pen stroke she makes is meticulously etched on gigantic

canvases, as though she were methodically setting each sand particle in a vast desert. She embodies an undiscovered dimension that enables her to see the world from every living thing's perspective. The intricacy of her work is unparalleled and it demands the viewer's uninterrupted attention to transport them into the sacred realms of nature.

Her notable exhibitions:

- i. 'Grey Contours' A Solo Art Exhibition – 2018; Alliance Francaise, Dhaka.
- ii. 7th Beijing International Art Biennale – 2017; Beijing, China.
- iii. 'Divergence' A Group Exhibition – 2017; Jehangir Art Gallery, Mumbai, India.
- iv. Goa Affordable Art Fest – 2017; Museum of Goa, Goa, India.
- v. SWAAD Annual Art Exhibition – 2015; Santiniketan, India.



**'Into the Folding Land',  
Series Floating Island**

74 cm × 55 cm

***There's no wrong or right  
Will they drift, will they unite  
They float day and night***



14.

Sharad Das

**Struggle with Mystery**

31 cm × 31 cm × 10 cm





**Kaleidoscope of Existence**

122 cm × 152 cm

Visual artist Sharad Das is based in Chittagong and approaches his work through a social lens. He focuses on the human body as his main subject and sees it as a fleeting and changing entity. He experiments with a variety of mediums and techniques and challenges the values of contemporary consumer culture in his work. His art includes drawing, sculpture, photography, text, print, readymade, performance, and video.

Under the influence of relentless consumerism, our societies have stratified around geopolitical realities, often devoid of humanity. Sharad's digital outputs in black and white are so poignant and so very haunting that they pull you into this vortex of introspection.

His notable exhibitions:

- i. Asian Art Biennale, Shilpakala Academy, Dhaka (2010, 2012, 2014, 2018)
- ii. Chobi Mela-10 (2020)
- iii. Chobi Mela-0 (2021) organized by DRiK and Pathshala
- iv. National Art Exhibition, Shilpakala

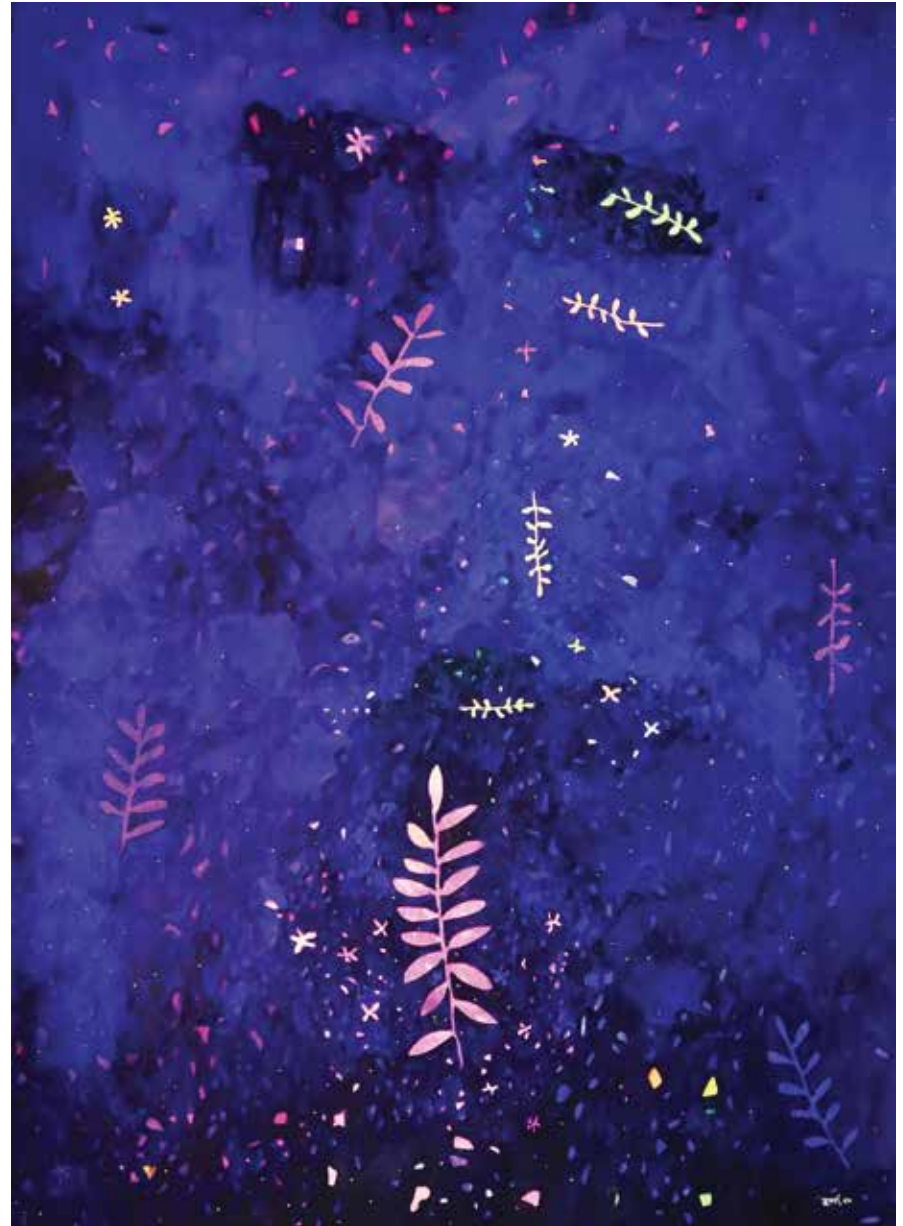
- Academy, Dhaka (2009, 2011, 2019)
- v. Community art project in J.J.Colony organized by Art 4 ALL, New Delhi (2017)
  - vi. "Celebrated Violence" Dhaka Art Center, Dhaka (2014)  
Performance at "News Food" curated by Wakilur Rahman at Bangladesh National Museum, Dhaka
  - vii. Shilpakala Academy, Chittagong  
Several group exhibitions
    - i. "All Characters Are Fictitious" Bistaar: Chittagong Arts Complex, Chittagong (2015)
    - ii. "Smriti Upakhyam" Rashid Chowdhury Gallery, Institute of Fine Arts, University of Chittagong (2015)
    - iii. "Blurred Borders" at Dhaka Art Center, Dhanmondi, Dhaka (2012)

***Secret keeping art  
Guarding close, a hidden truth  
Whispers held in heart***



# 15.

**Shuborna  
Morsheada**



Suborna Morsheada's is an apport from the future residing in a multi-dimensional world. Defying all the material senses, she is capable of traversing the variable dimensions of time to bring back elements from her past and smear them meticulously on her canvas. She bleeds love and stitches the open wounds with the threads of lust. She is on the front line of the battle for the throne of the meta

**Bishokha**

79 cm x 110 cm



*Joy comes and takes flight  
Like a bird in open sky  
Heavy heart, once light*



**Noverar Khoje**

70 cm x 104 cm

physical realm. Her weapons ranges from etching, lithograph, wood engraving, and anything within the gamut of applied and fine art.

Some of her astonishing exhibitions

- i. 22nd National Art Exhibition – 2017; Shilpakala Academy, Dhaka.
- ii. Indo-Bangla group Art Exhibition ‘Integrity of Bengal’ – 2017; Zainul Art Gallery, Dhaka.
- iii. Berger Young Painters’ Art Competition & Exhibition – Zainul Art Gallery, Dhaka.
- iv. Creative Density – Contemporary Art of The Golden Bengal, Imago Mundi, Luciano Benetton Collection, Italy.
- v. 17th Asian Art Biennial – 2016; Shilpakala Academy, Dhaka.
- vi. All Annual Art exhibition – 2009-2016; Zainul Art Gallery, Dhaka.
- vii. 20th Young Artist Art Exhibition – 2016; Shilpakala Academy, Dhaka.
- viii. 5th Tone International Miniature Art Biennale – 2015; Shilpakala Academy, Dhaka.





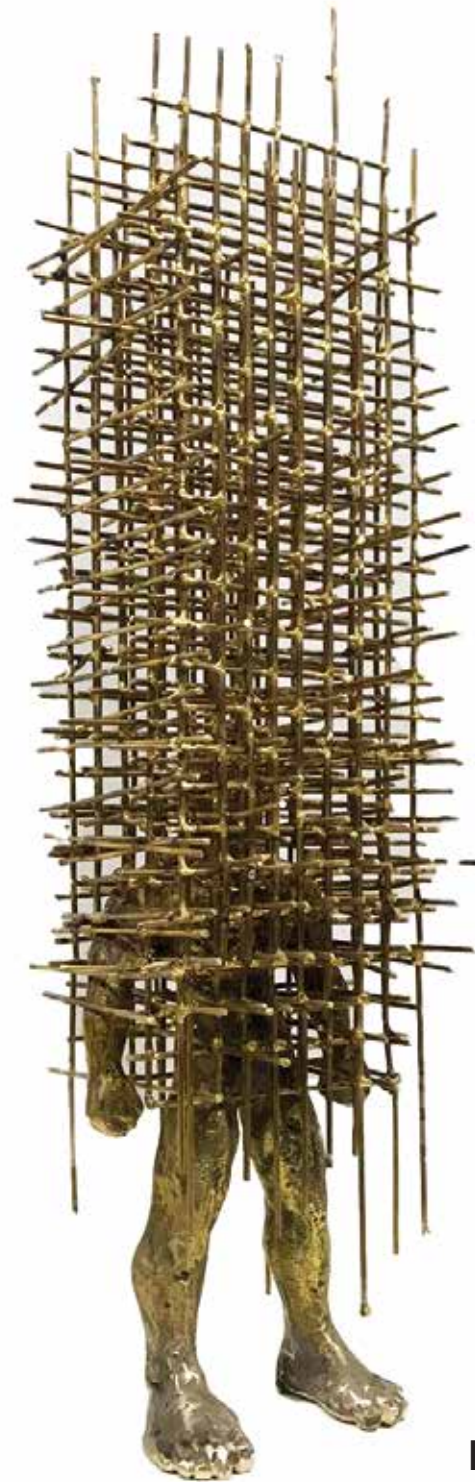
**Akashnila**  
94 cm x 75 cm



# 16.

## Syed Tareq Rahman

Tareq is a sculptor known for his enigmatic, intricate and seemingly chaotic structures that symbolize modern society's mechanistic nature. The complexities and contradictions of contemporary urban life are depicted through an innovative use of metals, concrete, fiberglass, wood, and even plastic pipes. Countless sketchy lines, as if magically frozen into metal, make the delightful pieces appear



**Existence-2**

71 cm × 22 cm × 22 cm



to be in constant motion. Indeed, they appear to be 2D pencil sketches that magically transform into 3D sculpture.

His wood sculptures hauntingly take on human form in their afterlife.

Tareq's artistic journey began with his lifelong fascination for understanding the basic fabric of how society operates and his desire to capture them in sculptures for people to better understand themselves. His keen power of observation appears to morph with changing times. Evidently, he is on the right track, having bagged seven prestigious awards in sculpture, including the Grand Award at the Microtopia International Art Fest of 2021-22, organized by Chittagong Art Club and Gallery Chittrak.

***Freedom from the case  
The butterfly to emerge  
And embrace the grace***



**Urban Being 4**

46 cm × 29 cm × 81 cm



**Soaring Man-2**

159 cm × 30 cm × 58 cm

## Apart from the Flower

43 cm × 81 cm

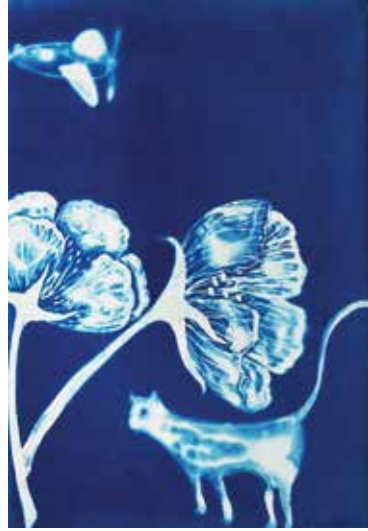


# 17.

## Mahmuda Siddika

Mahmuda Siddika is a talented visual artist based in Dhaka, Bangladesh. With an MFA in Printmaking from Rabindra Bharati University in Kolkata, India, and a BFA from the Faculty of Fine Arts at the University of Dhaka, Mahmuda has established a strong educational foundation to support her artistic pursuits.





*We declare war's cry  
Delicate blooms shielded strong  
Won't let dew drops dry*

Driven by a deep engagement with socio-political dialogue and mythological history, Mahmuda's art explores the impact of societal changes on communities. She fearlessly explores a range of mediums, including Printmaking, Painting, and Installation, to expand the boundaries of her artistic expression. Each medium serves as a conduit for her creative vision, enabling her to communicate complex narratives and evoke profound emotional responses from viewers.

Notable achievements in Mahmuda's career include winning awards for her print-based installation work at the 21st Young Artists Exhibition by the Shilpakala Academy in Dhaka and the 89th All India Fine Arts & Crafts Society in New Delhi. Her commitment to excellence was also recognized with a merit certificate from Rabindra Bharati University in Kolkata, India. Her works are being showcased in prestigious group exhibitions worldwide in venues such as Gallery NEST in Hangzhou, China, the Sato Museum of Art in Tokyo, Japan, and the Lalit Kala Academy in New Delhi, India.

**Mirage-1**

20 cm × 28 cm



## Save the Flower

137 cm × 213 cm

# 18.

## Apu Rajbonshi

After completing Diploma in Art and Craft from BAFA, Apu Rajbongshi embarked on a creative journey that paved his path towards development of his own art-language. Sculpture, drawing, and painting are Apu Rajbongshi's primary mediums, all stemmed from his own life experiences.

Growing up in a fishing household, Apu developed an intricate relationship with the fishing boat and nets that has visible impact on his work. These necessities, once essential for livelihood, now shape Apu Rajbongshi's existence in a unique way. The items that satisfy our physical hunger also find expression in his creative work, telling the stories of his family and the fishermen in our community.

Apu Rajbongshi's art becomes a form of expression as he observes the fishing community, striving to balance their dignity and hunger amidst the numerous social classes created by civilization. The intrusion of enormous trawlers threatens the fishermen's livelihoods, and they face fierce competition among themselves. Even in the past, fishermen yearned for better days and sought solace in their voyages.

We all confront the realities of life, experiencing similar struggles despite residing in the same environment but facing distinct social obstacles. This societal injustice fuels Apu Rajbongshi's motivation to make a difference through art.





## Mathshonyaya 04

208 cm × 35 cm × 15 cm

*Truth in vivid hues  
Intimate, affectionate  
All elements fuse*



## The Fisherman

248 cm × 120 cm × 62 cm

**EVOLVING OPINIONS  
CONTEXTUAL MINGLING  
PERPLEX CONCEIVING**

Javid Jalil

Our visible world orchestrates a symphony of interconnected meanings. We perceive and register a complex array of influences that shape our understanding in insightful and enigmatic ways. We absorb information through cognizant and involuntary channels, navigating the depths of our being.

Meaning, as a concept, carries connotations of significance and mystery. It is a reflection of our cognitive capacity to abstract and project our inner perceptions onto the entities of our focus. Objects, things, and circumstances don't inherently possess meaning; we imbue them with significance to fill the void of uncertainty.

The contents of our surroundings, situations, and knowledge spur a playful interplay of ideas. The convergence of globalized and individual experiences evolving concepts that shape our perceptual landscapes.

This group exhibition ventures into the realm of conceptual exploration, recontextualizing and reframing ideas through alternative perspectives and creative modules. Conceptions emerge from the

interplay of conditions, circumstances, and environments. This thought-provoking journey invites dialogue and encourages us to question preconceived notions, bridging the personal and holistic realms.

The artists participating in this exhibition delve into collective concerns that scrutinize our world's environmental, social, ecological, technological, and human aspects. Through their chosen mediums and expressive materials, they navigate asymmetric landscapes, prompting us to reassess conditioned ways of seeing.

This exhibition's dimensional perceptions take shape through the artists' diverse motives, representative objectivity, and carefully selected references. Their individual voices merge and coexist, revealing diversity and unity.

Ultimately, this exhibition invites viewers to engage with the expressive visual narratives and contemplate the multifaceted nature of our existence, offering a contemporary lens through which to explore the intellectual and emotional depths of our shared human experience.





## Under Your Spell

33 cm × 24 cm

Hridita Anisha

## Exploring the Paradox of Strength and Vulnerability in Transcendent Metal Sculptures

Anisuzzaman Faroque's "Gentle Grass" series of linear metal sculptures merge contrasting elements, blurring the boundaries between solidity and softness. Inspired by the intricate interplay between nature and human existence, these biomimicry forms create a captivating visual and visceral experience. The sculptures, with their resilient exteriors and concealed interiors, evoke a compelling paradox of strength and vulnerability. Faroque's artistic sensitivity shines through the elongated forms, defying gravity and inviting contemplation. Through tactile engagement, viewers are drawn into a profound connection with the artwork, surpassing the boundaries of perception. Each sculpture becomes a gateway to reflect on our place in the world, challenging notions of fragility and resilience. Faroque's craftsmanship sparks a dialogue, encouraging viewers to question their perceptions and explore the multifaceted nature of existence. The "Gentle Grass" series serves as a testament to the transformative power of art, illuminating the splendor and complexity of our reality. It invites us to embrace the mystery, in curiosity, and forge a deeper understanding of ourselves and the world we inhabit.

## Sonic Symphonies: Unveiling the Transformative Power of Sound through Sensory Sculptural Forms

Rupom Roy's sound sculptures immerse us in a sensorial expedition, revealing the metamorphosing power of sound to shape sculptural forms. Drawing on his rural upbringing, he harmonizes the organic rhythms of nature with artificial echoes, mapping the resonance of sound in his environment. Through a nuanced exploration of auditory perception, he transmutes these experiences into tangible expressions, crafting bronze and aluminum sculptures that resonate with both the palpable and ethereal realms of sound.

## Revealing the Intricate Interplay of Human Behavior in Contemporary Existence Renderings encapsulate the urban and absorbed physical responses

As beings immersed in a complex web of internal and external influences, our behavioral patterns become a reflection of our beliefs, attitudes, and personality traits interwoven with the social, cultural, and environmental fabrication that surrounds us. Sculptor Tareq Rahman delves into this elaborate interplay through his mixed media sculptures, employing wood, fiberglass, concrete, and metal to capture fleeting and impulsive gestures. His artistic renderings encapsulate the urban and absorbed physical responses of our

contemporary existence, inviting contemplation on the multifaceted nature of human behavior in the ever-evolving modern landscape.

## **The Indomitable Human Spirit amidst the Rhythmic Dance of Nature**

Apu Rajbongshi, deeply influenced by his upbringing in a fisherman's world, translates the essence of their lives into perceptible sculptures. Through intricate textural patterns and meticulous material manipulation, he breathes weight and significance into his creations. His artwork abridges the fisherman's struggle, capturing the juxtaposition of endurance and survival amidst the complexities of our contemporary society. Rajbongshi's suggestive expressions serve as a testament to the indomitable human spirit, entwined with the rhythmic dance of water and sky. It beckons us to contemplate the enduring connection between humanity and nature, and the profound stories embedded within them.

## **Interlacing the labyrinthine of womanhood, delving into the depths of her psyche**

In "The Roots," Jinnatun Jannat skillfully interlaces the intricacies of womanhood, delving into the depths of her psyche. Through her art, she traces fading folk art motifs and stories, giving voice to

femininity's unspoken yearnings and enigma. Jannat's use of the Mon Pakhi motif, symbolizing the soul bird of freedom, adds a metaphorical layer to her visual language. With a focus on linear movement and a minimalist approach, her artwork evokes a symbolic ambiance, inviting contemplation of profound themes.

## **Urging Reflection on Values, Sensitivity, and our Interconnectedness with All Organisms.**

Nargis Poly's artistic exploration delves into the theory of forms and the realm of platonic realism, where mental projections shape our perception of the somatic and incorporeal. Her work invites introspection and prompts us to question our values, sensitivity, and shared relationship with all organisms. Through virtual visual expressions, she challenges the notion of speciesism and exposes the exploitation of animals while exploring spirituality and transcending sensory experiences. Poly's acrylic medium on canvas and paper manifests in both realistic and nonobjective styles, tailored to her conceptual preferences. Her art combines digital aesthetics with intricate Nano art motifs, giving graphical form to ontological inquiries.



## **Exploring the Interplay of Biodiversity, Folklore, Mythology, distinctiveness, and Environment concerns of imbalance conflict and coexisting between man and nature**

Ananya Mehpar Azad's artistic endeavors encompass a visually convoluted exploration of entities through painting on fabric and mixed media fabrication on silk. His work delves into the connotative fragments of visual information, forging unconventional relationships that highlight the singularity of the surface while incorporating elements of folk art. The artist intertwines biodiversity, folklore, mythology, ethnicity, and nature, creating a collage of impressions that rhythmically blend with the surrounding environment. Azad's compositions exude an affinity with tree structures adorned with humanoid tiger faces, leaves, flowers, and goddesses, offering a detailed and intriguing glimpse into curious elusive realms. Through these artistic expressions, Space distribution, concerns of imbalance conflict and coexisting between man and nature.

## **Inquiry into the reciprocity between Nature, Technology, and Individual Identity. Coexistence in Evolving Landscapes**

Auntora Mehrukh Azad's acrylic palettes serve as a medium for contemplating the distribution of space and the delicate balance, conflict, and coexistence between humanity and nature. His artworks juxtapose organic and synthetic elements, exploring the manipulation of natural spaces by technology. Through a deliberate use of color, particularly the vibrant pink electric hue, Azad symbolizes artificiality and human dominance. As a landscape painter, he reimagines familiar natural settings, infusing them with minimalism and focused placement of elements, thus portraying the gradual replacement of nature's essence with man-made objects, such as transforming a tree's form into traffic lights. These urban alterations prompt a profound questioning and reconfiguration of individual identities in relation to their changing environments. Azad's work invites reflection on the intricate dynamics between humans, technology, and the natural world.

## **Psychological Insights Revitalizing Traditional Narratives with Satire and Mimicry: envisaging the intricate quandary inherent in the fabric of our Being**

Hridita Anisha is an artist who skillfully weaves psychological insights into her artworks, children's illustrations, writings, and zine crafting innovative processes of conceptualizing ideas from various platforms art, literature, activism, or personal narratives. With a playful and unconventional approach, she brings everyday scenarios to life through energetic and humor-filled genre scenes. Her unique style features forceful and sketchy

brushstrokes that capture movement and evoke a sense of liveliness. Anisha's work seamlessly blends elements of contemporary visual storytelling, fairytales, satire, and mimicry, resulting in thought-provoking compositions. By reimagining traditional narratives and characters, she breathes new life into familiar stories, infusing them with her own zest and keen observation of the world. Through her art, Anisha creates a cohesive and interconnected chronicle reflecting human existence's intricate web.

## **Evaluating the Behavioral and lifestyle diversity Temporal Reflections and Magical Realism: Rasel Rana's Symbolic Exploration of Existence, Gender Identity, and Social Norms reassess traditional binary construct**

Rasel Rana, decors his visual image with symbols as time metaphors that serve as temporal reflections, intertwining and engaging with fragments of elements creating the lucidity of reality. His artistic vision transcends the ordinary, imbuing his works with a magical aura. A dreamlike association of the seen into an amplified artificial resonance of flamboyant colors transcends the mundane into the cosmopolitan landscape of patterns. Where the artist discourses on layers of existences, existing ambiances, and the multiplicity of modes and tones of gender issues, searching for identity, evaluating the behavioral and lifestyle diversity within the preconditioned views of the social norms, and so on. And creating acknowledgment and acceptance through a pictorial aroma of magic realism.

## **Site-Specific Drawing Modules Fuse Fragility, Interaction, and Evolving Realities**

Embracing the nuances and complexities of our constantly changing world, fragile and broken lines are associated with each other like a thread of urge and experience. Soma Surovi creates site-specific drawing modules liberated with live interaction and a direct approach to visual interpretation. Creating drawing installation through a fragmented approach of moments and coactivity. Between impulses, observing, and anticipating. She enjoys outdoor experiences to create her visuals as it gives her involvement and interaction with various verges of lifestyle realities. She strives for interactive display inviting viewers to engage with her site-specific work and experience its unique beginnings. She constantly transforms her working environment, infusing her personal vision and imagination to rearrange the motifs with a unique linear integration.

## **Faces of Artistic Voyage: Empathetic Revelations and Restless Connectivity Reflected in Psychic Projections**

The act of painting faces serves as a profound revelation and introspective projection for artists, as they strive to capture an image that transcends mere physicality, delving into the depths of

self-identity and forging meaningful connections between individuals. Farzana Urmi, the painter, explores her restless spirit and the perpetual search for self through an empathetic connection with Rohingya refugees. Her art delves into the complex dynamics of the visible and invisible realms, unraveling profound insights into human existence. Farzana Urmi delves into seen and unseen countenances, delving into the depths of temperament displacement, psychic projection, and the relentless pursuit of existential connectivity.

## **Manifesting Utopian Aspirations: Mahmuda Siddka's Cyan Blue Prints Ensnare Perceptions and Foster Conscious Choices**

Mahmuda Siddka, an artist driven by a perspicacious quest, endeavors to manifest a utopian aspiration through her captivating printed images. With cyan blue prints emanating white lines, her artworks intricately challenge the elusive presence that often ensnares our perceptions. Metaphorically using images as her medium, Siddka embarks on a pictorial journey that delves into profound symbols and designs, inviting contemplation on our destructive animalistic nature. Through her artistic process, she skillfully transcends and reconfigures these innate tendencies, urging us to embrace conscious choices that foster tranquility and engender a regenerative environment. Siddka's art projects assimilate interactive activities within communities, promoting awareness and combatting human ignorance that obscures truth and distorts the obvious. Her titled artworks as "mirages" poetically abbreviate the interplay between deceptive appearances and distant illusions.

## **Insights of Cultural Query and Individuality Elongated Figures Resonate with Folklore, Family Rituals, and Behavioral Complexities**

Storytelling illuminates our experiential faculties, instilling existence with purpose by forging connections and crafting narratives that bestow meaning upon our lives. Cultural interplay weaves intricate connections between characters, entangling behavioral complexities. Folk heritage, family rituals, and contemporary circumstances shape pseudo-personas, revealing profound insights. Azizee Fawmi, the artist, molds elongated figures through layered patched pigments and lines embodying attitudes. He translates folklore, familial patterns, attitudes, and heritage into his unique characters, forging a connection between folk narrative and personal identity.

## **Fragmented elements fuse linear drawings into a restless and dynamic textual interface**

The artist's intricate exploration of interconnectedness unveils the subtle fragments of their surroundings. Through keen observation and introspection, they project their memories, reflections, emotions, and reactions, creating a projection of self. This artistic endeavor serves as a conduit, revealing intangible experiences through



motifs that reference the external world, rearranging the tangible reality. Rakibul Anwar's fragmented elements fuse linear drawings into a restless and dynamic textual interface, offering a pictorial perspective that beckons the viewer to explore within.

## **Unraveling the dynamics of society, culture, environment, and politics through multilingual discourse and postural expressions**

This artist delves into the profound existential dimensions of the human form, unraveling its intricate interplay. Through a multilingual discourse, he bridges the virtual realm of the psyche with the physical domain, redefining the boundaries of reality. Employing postural expressions as a vehicle, he magnifies the tensions ingrained in the body, derived from the far-reaching influences of society, cultural assimilations, environmental imprints, and political vicissitudes. His work embodies a poignant exploration of the complex interconnections between the individual and the collective human experience. Sharad Das incorporates various multidisciplinary mediums to attribute his figurative images as a symbol of kaleidoscopic blends of reality.

## **Reminiscence Intertwining consciousness and experiences**

## **to shed light on the timeless impact of structures and personal connections**

Nazmun Nahar Keya delves into the deep nature of memory, where thoughts intertwine with consciousness, allowing us to relive and understand experiences with renewed perspective. Her art reveals the intrinsic remembrance of timeless structural impacts and personal relationships. Influenced by the Japanese Nihonga style of painting, Keya explores the use of mineral pigments and organic materials on silk or paper. This unique artistic approach becomes the foundation for her exploration of architectural pasts and personal relationships. By incorporating archived prints of old buildings and gold leaves, with washes of coffee and graphite blending on Japanese Washi paper she creates a visual representation of her own recollections. Through graphite drawings and the careful assembly of paper cuts and sculpted brass designs replicating fragments from the old building forms, Keya intertwines observation and reminiscence, evoking delicate emotions. Her artwork serves as a bridge between past and present, inviting viewers to reflect on their own recalls and the interconnectedness of time, space, and personal narratives.

**Encompasses the sublime dance of emotions and recalling, linking patterns to create a multisensory...evocative dialogue with her dreamscape conversing, the delicate balance between sweetness and despair**

Her renderings apprehend unique moments, creating pictorial facets of sensations that engage the viewer's psyche. Through her woodcut prints, Morsheada masterfully employs contrasting colors and figures, capturing the enigmatic play of light and shadow that unravels recollecting visions. Her artistic process becomes a transitory journey, where emotional responses evolve into a dream of relief, embodied by vibrant, joyous expressions. The organic interplay within her works resonates deeply, inviting contemplation on the interdependencies between self and surroundings. Morsheada's lithography prints reveal a sensory tapestry, evoking tactile sounds, aromas, and intimate connections, as she explores various stages of absorption and exploration. In her black and white prints, temperaments fuse, projecting shapes that evoke one another in a cozy interplay. Mingling plants, movements, and sensory patterns reflect interfaces of attraction and interdependency while marking the passage of time onto the surfaces.

This exhibition immerses us in the probing realm of evolving opinions, urging us to reevaluate our perceptions and delve into the multifarious nature of reality. As there are physical dimensions and dimensions of thought. Through visual and three spatial facets of sculptural expressions, we realize the tangibility of physicality while engaging with the conceptual dimensions that encompass synthetic,

digital, and simulated environments. Time becomes a temporal dimension, and interactivity adds another layer of intricateness. Also, the metaphysical, consciousness of intangible realms of perception and the intertwined diversity of reality serve as a vortex, inviting parallel journeys of contemplation that awaken our introspective minds. It prompts us to embark on an existential inquiry, where cerebral acumens unfold and challenge our understanding of existence. By exploring these interconnected dimensions, the exhibition catalysts a metamorphic exploration of the ever-evolving nature of perception and the complexities of our shared human experience.

# 9+ONE

INTER  
DIMENSIONAL  
JOURNEYS

a group exhibition by  
**EMERGING ARTISTS**

**Published by**

Edge, The Foundation

**Special Thanks**

Iftekhar A. Khan  
Oaliul Islam Piash  
Shahriar Iftekhar  
Lamia Farzana  
Ahmmadur Rahman Sheikh  
Rahim Hossain Romy  
Moakhirul Mahmood

**Contributor**

Javed Jalil

**Design**

Tasnuva Rahman

**Curated by**

Edge Gallery Team and Rezwan Rahman

**Cinematography**

Ashik Rahman  
Edge Gallery Team





**EDGE**  
THE FOUNDATION

Bay's Edgewater (Ground Floor)  
NE (N) 12, North Avenue  
Gulshan 2, Dhaka 1212  
Bangladesh

[edgethefoundation.com](http://edgethefoundation.com)

© 2023 Edge, The Foundation